

# PREHOSPITAL ASPIRIN USE AND OUTCOMES IN COVID-19+ PATIENTS

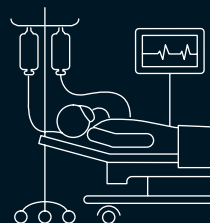


## OUTCOME OF PREHOSPITAL ASPIRIN USE

## HAZARD RATIO

Progression to severe disease needing invasive ventilation, renal replacement, vasopressors, and extracorporeal membrane oxygenation

**0.91**  
(0.84 to 0.99)



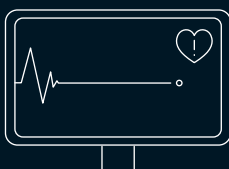
Need for ICU admission

**0.78**  
(0.73 to 0.84)



New myocardial infarction

**1.21**  
(1.04 to 1.42)



Hospital mortality

**0.89**  
(0.82 to 0.97)



Mean hospital-free days

**+1.0**  
(0.66 to 1.35)

**21,579**

COVID-19-Positive Patients

**185**

Sites

**28**

Countries