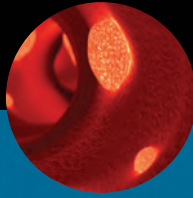


September 16-17, 2010 | Caesars Palace | Las Vegas, Nevada, USA



# Pharmacotherapy in Critical Illness

No matter your role in patient care, you can help to provide patients with the maximum benefits of pharmacotherapy.

**Register today**

See the back cover, visit [www.sccm.org/pharmacotherapy](http://www.sccm.org/pharmacotherapy) or contact SCCM Customer Service at +1 847 827-6888 to reserve your spot.

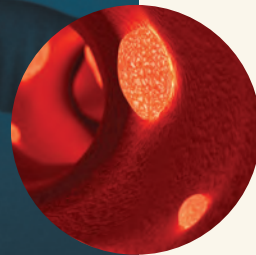
Society of  
Critical Care Medicine  
The Intensive Care Professionals



**Right Care  
Right Now.**

# Our Promise

We promise to provide exceptional learning experiences, a vibrant community and essential tools that make you successful in improving the quality of patient care.



Studies have shown that optimal administration of intensive care unit (ICU) drug therapies is provided through multiprofessional collaboration and helps to decrease drug-related costs, prevent adverse drug events and improve the quality and efficiency of care.

Obtain the latest evidence-based information on how to optimize drug therapy outcomes and integrate new trends into your clinical practice at the Society of Critical Care Medicine's (SCCM) Pharmacotherapy in Critical Illness conference, September 16 and 17, 2010, in Las Vegas, Nevada, USA.

The conference will feature didactic sessions, case presentations, pro-con debates, audience participation, and question-and-answer sessions, focusing on three topic areas:

- **Delirium and Sedation Update**

Explore current methods used in the assessment and pharmacologic management of delirium as well as related treatment challenges.

- **Bleeding and Coagulation**

Understand current strategies for identifying and treating patients who are susceptible to events involving critical bleeding and heparin-induced thrombocytopenia, including thrombosis syndrome.

- **Hemodynamic Emergencies**

Learn about the challenges of fluid resuscitation, the various approaches for volume replacement and effective pharmacologic management for hypotensive and hypertensive emergencies.

## Join SCCM Today!

Save up to \$100 off the pharmacotherapy conference nonmember registration fee! Members save up to 25% on educational programs and resources. For details on membership options and benefits, visit [www.sccm.org/membership](http://www.sccm.org/membership).

Register at [www.sccm.org/pharmacotherapy](http://www.sccm.org/pharmacotherapy)

## Invited Faculty



**Co-Chair**  
**Gretchen M. Brophy, PharmD, FCCM**  
 Virginia Commonwealth University  
 Richmond, Virginia, USA



**Co-Chair**  
**Richard R. Riker, MD**  
 Maine Medical Center  
 Portland, Maine, USA

**Amjad AlMahameed, MD, MPH**  
 Beth Israel Deaconess Medical Center  
 Boston, Massachusetts, USA

**Jeremy D. Flynn, PharmD**  
 University of Kentucky College of Medicine  
 Lexington, Kentucky, USA

**Gilles L. Fraser, PharmD, FCCM**  
 Maine Medical Center  
 Portland, Maine, USA

**Paul C. Hebert, MD, MHSc**  
 University of Ottawa  
 Ottawa, Ontario, Canada

**Ishaq Lat, PharmD**  
 University of Chicago Hospitals  
 Chicago, Illinois, USA

**Paul E. Marik, MD, FCCM**  
 Eastern Virginia Medical School  
 Norfolk, Virginia, USA

**Anne S. Pohlman, MSN, RN, CCRN, FCCM**  
 University of Chicago Medical Center  
 Chicago, Illinois, USA

**Curtis N. Sessler, MD, FCCM**  
 Medical College of Virginia  
 Virginia Commonwealth University  
 Richmond, Virginia, USA

**Maureen A. Smythe, PharmD, BCPS**  
 William Beaumont Hospital  
 Royal Oak, Michigan, USA

## Continuing Education

### Program Objectives:

This conference is intended to provide you with up-to-the-minute research and information to be able to:

- Identify tools for assessment of delirium in the critically ill patient
- Debate controversies related to treatment of the agitated critically ill patient
- Evaluate strategies appropriate to managing a critically ill patient experiencing ethanol withdrawal
- Differentiate evidence-based medicine and controversies surrounding management of critically ill patients experiencing bleeding
- Examine diagnostic controversies and treatment modalities specific to critically ill patients with suspected heparin-induced thrombocytopenia (HIT) and HIT with thrombosis (HITT)
- Apply evolving recommendations for use of prophylactic and therapeutic antithrombotics in the critically ill
- Discuss pharmacotherapeutic modalities for select hemodynamic emergencies

### Intended Audience:

This program is intended for clinicians who have responsibility for the pharmacologic management and evaluation of critically ill or injured patients. These clinicians include the following:

- Physicians
- Pharmacists
- Advanced Practice Nurses
- Registered Professional Nurses
- Physician Assistants
- Respiratory Therapists
- ICU Support Team Members

### Type of Activity:

This activity was prepared to apply and facilitate pharmacologic management of critically ill patients in your clinical practice and will include didactic sessions, case presentations, pro-con debates, audience participation, and question-and-answer sessions.

### Competencies:

SCCM supports recommendations that will promote lifelong learning through continuing education. SCCM promotes activities that encourage the highest quality in education that will enhance knowledge, competence or performance in critical care practice. This activity will meet the following:

- Patient- and Family-Centered Care
- Practice Applications
- Communication
- Quality Improvement

### Credit Hours:

**Nurses** – This activity has been approved by the California Board of Registered Nursing (provider #8181) for up to 11.5 contact hours.



**Pharmacists** – The Society of Critical Care Medicine is accredited by the Accreditation Council for Pharmacy Education (ACPE) as a provider of continuing education. This conference will provide up to 11.5 contact hours of continuing education credit (0236-0000-10-210-L01-P). Pharmacists must complete an online form to verify session attendance. Upon submitting the online form, a statement of credit can be downloaded.

**Physicians** – Accreditation Statement: The Society of Critical Care Medicine is accredited by the Accreditation Council for Continuing Medical Education (ACCME) to provide continuing medical education for physicians. Designation Statement: The Society of Critical Care Medicine designates this educational activity for a maximum of 11.5 *AMA PRA Category 1 Credits*™. Physicians should claim credit commensurate with the extent of their participation in the activity.

For additional information, please contact SCCM at [education@sccm.org](mailto:education@sccm.org) or +1 847 827-6869.

## Preliminary Agenda

Thursday, September 16, 2010

Time	Program/Activity	Presenter
7:00 a.m.	Registration and Continental Breakfast	
8:00 a.m.	Welcome and Program Overview	
<b>Delirium and Sedation Update</b>		Moderator: Richard R. Riker
8:15 a.m.	Identification, Prevention and Treatment of Delirium: Challenging Cases <ul style="list-style-type: none"> <li>• Etiology and Assessment</li> <li>• Treatment Approaches</li> </ul>	Curtis N. Sessler Gilles L. Fraser
9:30 a.m.	Delirium Treatment Challenges: Ethanol Withdrawal	Ishaq Lat
10:15 a.m.	<b>BREAK</b>	
10:30 a.m.	Strategies for Treatment and Implementation: Sedation and Delirium Guideline Support	Curtis N. Sessler Anne S. Pohlman Gilles L. Fraser Gretchen M. Brophy
11:30 a.m.	Question-and-Answer Session: Morning Wrap-Up	Gilles L. Fraser Ishaq Lat Anne S. Pohlman Curtis N. Sessler
12:00 p.m.	<b>LUNCH ON YOUR OWN</b>	
<b>Bleeding and Coagulation</b>		Moderator: Richard R. Riker
1:30 p.m.	HIT and HITT <ul style="list-style-type: none"> <li>• Making the Diagnosis</li> <li>• Treatment</li> </ul>	Amjad AlMahameed Maureen A. Smythe
2:45 p.m.	Critical Bleeding	Jeremy D. Flynn
3:30 p.m.	<b>BREAK</b>	
3:45 p.m.	Challenging Cases Debate	Amjad AlMahameed Maureen A. Smythe
5:00 p.m.	Question-and-Answer Session: Afternoon Wrap-Up	Amjad AlMahameed Jeremy A. Flynn Maureen A. Smythe



# Preliminary Agenda

Friday, September 17, 2010

Time	Program/Activity	Presenter
7:00 a.m.	Registration and Continental Breakfast	
	<b>Hemodynamic Emergencies</b>	Moderator: Gretchen M. Brophy
8:00 a.m.	Fluid Resuscitation: When and How Challenging Cases Debate	Paul E. Marik Paul C. Hebert
	<b>Urgent Blood Pressure Management</b>	Moderator: Gretchen M. Brophy
9:15 a.m.	Hypotension and Shock	Paul E. Marik
10:15 a.m.	<b>BREAK</b>	
10:30 a.m.	Hypertensive Emergencies	Gretchen M. Brophy
11:30 a.m.	Panel Discussion Question-and-Answer Session	Paul C. Hebert Paul E. Marik
12:00 p.m.	Program Evaluation	
12:15 p.m.	<b>ADJOURN</b>	



## Hotel and Travel

### Caesars Palace

3570 Las Vegas Boulevard South  
Las Vegas, Nevada 89109 USA  
www.caesarspalace.com  
Reservations: +1 866 227-5944



Reigning at the heart of the Las Vegas Strip, Caesars Palace ranks among the world's top luxury resorts known for their originality and beauty. Well-appointed guest rooms are all within a short walk or elevator ride of the conference center, restaurants, entertainment, and shopping. From the moment you walk in, you'll find impeccable service, luxury and all the little details that make the difference between an ordinary visit and a spectacular experience.

### SCCM Rate: \$159 Single/Double occupancy\*

\*Rate does not include applicable taxes.

To make your hotel reservation, contact the hotel directly, or visit <https://resweb.passkey.com/go/SCSCCO>, before Wednesday, August 25, 2010. Identify yourself as a participant in SCCM's 2010 Pharmacotherapy in Critical Illness conference to receive the special SCCM discounted rate. Every effort will be made to honor all room preferences; however, requests cannot be guaranteed. All rooms are based on availability. Reservations made after Wednesday, August 25, 2010, may not receive discounted SCCM rates. Reservations must be accompanied by a deposit equal to the first night's room and tax or guaranteed with a major credit card. Cancellations must be made at least 72 hours prior to arrival or the deposit will not be refunded. Check-in time is 4:00 p.m. Check-out time is 11:00 a.m.

## Travel to Las Vegas

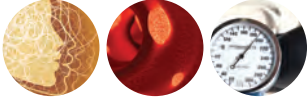
The Society of Critical Care Medicine has arranged for discounted airfares with **United Airlines** to the Pharmacotherapy conference in Las Vegas, Nevada, USA.



Take advantage of the following savings: earn a 2% to 10% discount off applicable fares, including first-class fares. By purchasing your ticket at least 30 days in advance of your scheduled travel, you will receive an additional 5% discount. This special offer applies to travel on domestic segments of all **United Airlines, United Express, TED, and United** code share flights (UA\*) operated by **US Airways, US Airways Express, Air Canada**, and international segments on **United and Lufthansa** flights.

Make your reservations now while the lowest fares are still available. Call **United Airlines toll-free at +1 800 521-4041** for domestic and +1 800 538-2929 for international travel and mention meeting ID **500ZD** to receive SCCM travel discounts. If booking your flight online at [www.united.com](http://www.united.com), enter **500ZD** in the promotion field. Alternatively, you may contact SCCM's official travel agency, **Travel Leaders, at +1 800 238-6903** for assistance with your travel needs.

Register at [www.sccm.org/pharmacotherapy](http://www.sccm.org/pharmacotherapy)



# Registration Form Pharmacotherapy in Critical Illness

Caesars Palace, Las Vegas, Nevada, USA | September 16-17, 2010

### Choose from four easy ways to register:

For orders placed online or by phone, please have your credit card, Customer ID and source code ready. (Your source code is located in the bottom right corner of this form.)

- 1. Online:** [www.sccm.org/pharmacotherapy](http://www.sccm.org/pharmacotherapy)
- 2. Phone:** +1 847 827-6888
- 3. Fax:** +1 847 493-6444
- 4. Mail:** SCCM, 35083 Eagle Way, Chicago, IL 60678-1350, USA

Please type or print clearly. Please keep a copy of this form for your records.

Customer ID#: \_\_\_\_\_  
 First Name: \_\_\_\_\_ Middle Initial: \_\_\_\_\_ Last Name/Surname: \_\_\_\_\_  Male  Female  
 Organization: \_\_\_\_\_ Address: \_\_\_\_\_  
 City: \_\_\_\_\_ State/Province: \_\_\_\_\_ Zip/Postal Code: \_\_\_\_\_  
 Country: \_\_\_\_\_ Address Type:  Home  Office  
 Phone: \_\_\_\_\_ Fax: \_\_\_\_\_ Email: \_\_\_\_\_

Please list all of your Degrees/Credentials (ex.: ACNP, MD, PharmD, RN, RRT, etc.): \_\_\_\_\_

Please list your Primary License/Board Certification (ex.: Registered Nurse, Internal Medicine): \_\_\_\_\_

Please list your Primary License/Board Certification year (ex.: 2001): \_\_\_\_\_

### Course Registration Fees (Please check the appropriate classification.)

Act by August 4, 2010 and save!	Until September 1, 2010	Amount Due
<b>SCCM Members</b> <input type="checkbox"/> Physician \$525 <input type="checkbox"/> Healthcare Professional* \$365 <b>Non-Members</b> <input type="checkbox"/> Physician \$625 <input type="checkbox"/> Healthcare Professional* \$430	<b>SCCM Members</b> <input type="checkbox"/> Physician \$625 <input type="checkbox"/> Healthcare Professional* \$440 <b>Non-Members</b> <input type="checkbox"/> Physician \$725 <input type="checkbox"/> Healthcare Professional* \$505	\$
		\$

\*Verification letter required with registration for fellows, residents and students to receive the Healthcare Professional rate.  
 Advance registration will be accepted until September 1, 2010. Thereafter, registrations will be accepted on site only.

**Payment Information:** Please send payment with registration form. Inquiries can be emailed to [registration@sccm.org](mailto:registration@sccm.org).

**Check** (must be U.S. funds drawn on a U.S. bank) **Credit Card:**  American Express  Discover  MasterCard  Visa

Card Number: \_\_\_\_\_ Expiration Date: \_\_\_\_\_

Cardholder Name: \_\_\_\_\_

Cardholder Signature: \_\_\_\_\_ Date: \_\_\_\_\_

If you have special needs related to a disability, please contact SCCM Customer Service at +1 847 827-6888 or via email at [registration@sccm.org](mailto:registration@sccm.org).

Cancellations must be submitted in writing. All cancellations are subject to a \$75 non-refundable processing fee and must be postmarked prior to September 1, 2010, to be eligible for a refund. Cancellations postmarked after this date will NOT be refunded. Dates for Pharmacotherapy in Critical Illness are subject to change and/or cancellation. In the event of cancellation, only individual registration fees will be reimbursed. Please allow four weeks to process refunds.

